

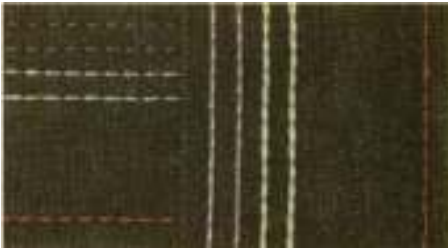
WILLCOX & GIBBS
MS-4650 Series

4-needle needle feed chainstitch machines

4-needle needle feed chainstitch machines + 1 needle lockstitch

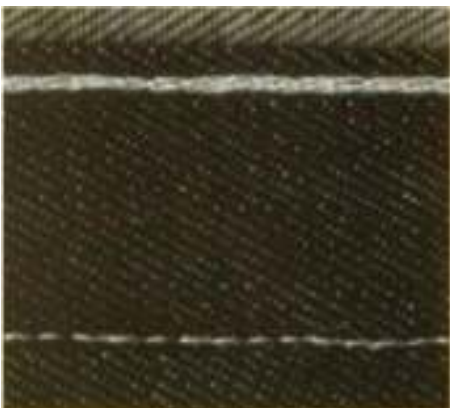
Sewing

WILLCOX & GIBBS



COMMON SPECIFICATIONS:

Stitch Type:	Chainstitch (4x 401 stitch) Chainstitch/Lockstitch (4x 401 stitch + 1x 301 stitch)
Max. Sewing Speed:	4000 Stitches/min
Fabric Clearance:	up to 9 mm
Max. stitch length:	6.4 mm
Needle gauge:	



ADVANTAGE[®]

- Differential feed
- Push button stitch regulator
- Rear puller
- Excellent automatic lubrication
- available direct drive
- Best value (quality-price) in the industry

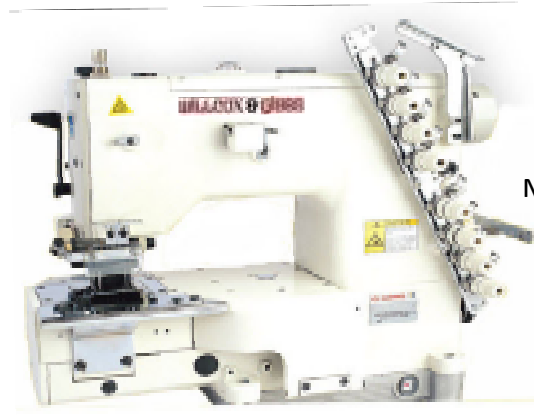
規格/SPECIFICATIONS:

WILLCOX & GIBBS

型號 Model	最大轉速 Max. Speed S.P.M.	縫口長度 Stitch Length mm	押腳提升 Lifting Of Presser Foot mm	使用針 Needle System	針棒行程 Needle Bar Stroke mm	針數 Needle	線數 Thread
MS-4650WB	4000	2.1-6.4	9	DVx57 #21(4) DPx17 #21	32	4+1	10
MS-4650	4000	2.1-6.4	9	DPx17 #21	32	4	8



Available with flanged on servo motor
MS-4650WB-SM
MS-4650-SM



MS-4650

With cylinder-bed design, it is suitable for stitching the waist of jeans, uniform and undershorts.

pima

PIMA LLC

PFAFF Industrial of America, Inc.

2200 Norcross Parkway, Suite 280A

Norcross, GA 30071

1-770-447-7545

Office@pfaff-industrial.us

www.pfaff-industrial.us

