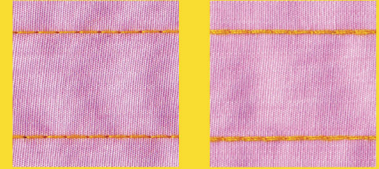




CS-5910



Model CS-5910	S.P.M. 5,000
Max. Stitch Length 4mm	Lift Of Presser Foot (Hand/Knee) 5mm/10mm
Needle System TV×7 #11 (#9~#21)	
Needle Bar Stroke 30mm	Looper Stroke 21.5mm

High Speed, Single Needle, Double Chainstitch, Flatbed Sewing Machine. (With Reverse Stitch)

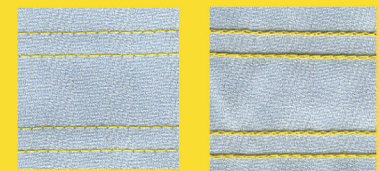
Adopt the excellent automatic lubricating system, running smooth and no noise, easy to maintain and improve the mechanism durability.

Applied with the inclined crank type looper & mechanism, so increased the function & strength & durability.

- For shirt cuff side sewing, trousers side sewing, overcoat back center sewing and so on.



CS-5900



Model CS-5900	S.P.M. 5,000
Max. Stitch Length 4mm	Lift Of Presser Foot (Hand/Knee) 5.5mm/10mm
Needle System TV×7 #14 (#9~#21)	
Needle Bar Stroke 30mm	

High-Speed, Double Needle, Double Chainstitch, Flatbed Sewing Machine. (Parallel Needle Gauge).

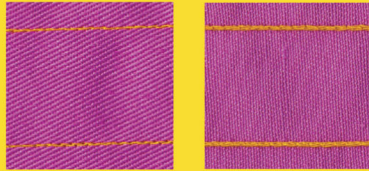
The machine is capable of perform the condensation stitching that prevents the sewn materials from fraying and produces beautiful seams of consistent quality.

Adopt the excellent automatic lubricating system, running smooth and no noise, easy to maintain and improve the mechanism durability.

- Applied with the inclined crank type looper & mechanism, so increased the function & strength & durability.
- Standard needle gauge: 1/4" (6.4mm). Many different kinds of optional attachment & optional needle gauge could enhance the production efficiency. Suitable for hemming, lap seaming, tape attaching, zipper attaching, decorative stitching, wetting,etc..



CS-5920



Model CS-5920	S.P.M. 5,000
Max. Stitch Length 4mm	Lift Of Presser Foot (Hand/Knee) 5.5mm/10mm
Needle System TV×1 #14(#9~#21)	
Needle Bar Stroke 30mm	

High-Speed, Double Needle, Double Chainstitch, Flatbed Sewing Machine. (Tandem Needle Gauge).

The machine is capable of perform the condensation stitching that prevents the sewn materials from fraying and produces beautiful seams of consistent quality. Adopt the excellent automatic lubricating system, running smooth and no noise, easy to maintain and improve the mechanism durability.

- Applied with the inclined crank type looper & mechanism, so increased the function & strength & durability.
- Suitable for side seaming & joining seat of slacks,etc..



CS-5930



Model CS-5930	S.P.M. 4,000
Max. Stitch Length 4mm	Lift Of Presser Foot (Hand/Knee) 5.5mm/10mm
Needle System TV×1 #14 (#14~#21)	
Needle Bar Stroke 30mm	

High-Speed, Three Needle, Double Chainstitch, Flatbed Sewing Machine.

The machine is capable of perform the condensation stitching that prevents the sewn materials from fraying and produces beautiful seams of consistent quality. Adopt the excellent automatic lubricating system, running smooth and no noise, easy to maintain and improve the mechanism durability.

- Standard gauge: three needle 1/4" (1/8" +1/8") , Applied with the inclined crank type looper & mechanism, so increased the function & strength & durability. Suitable for stitching jeans,etc..